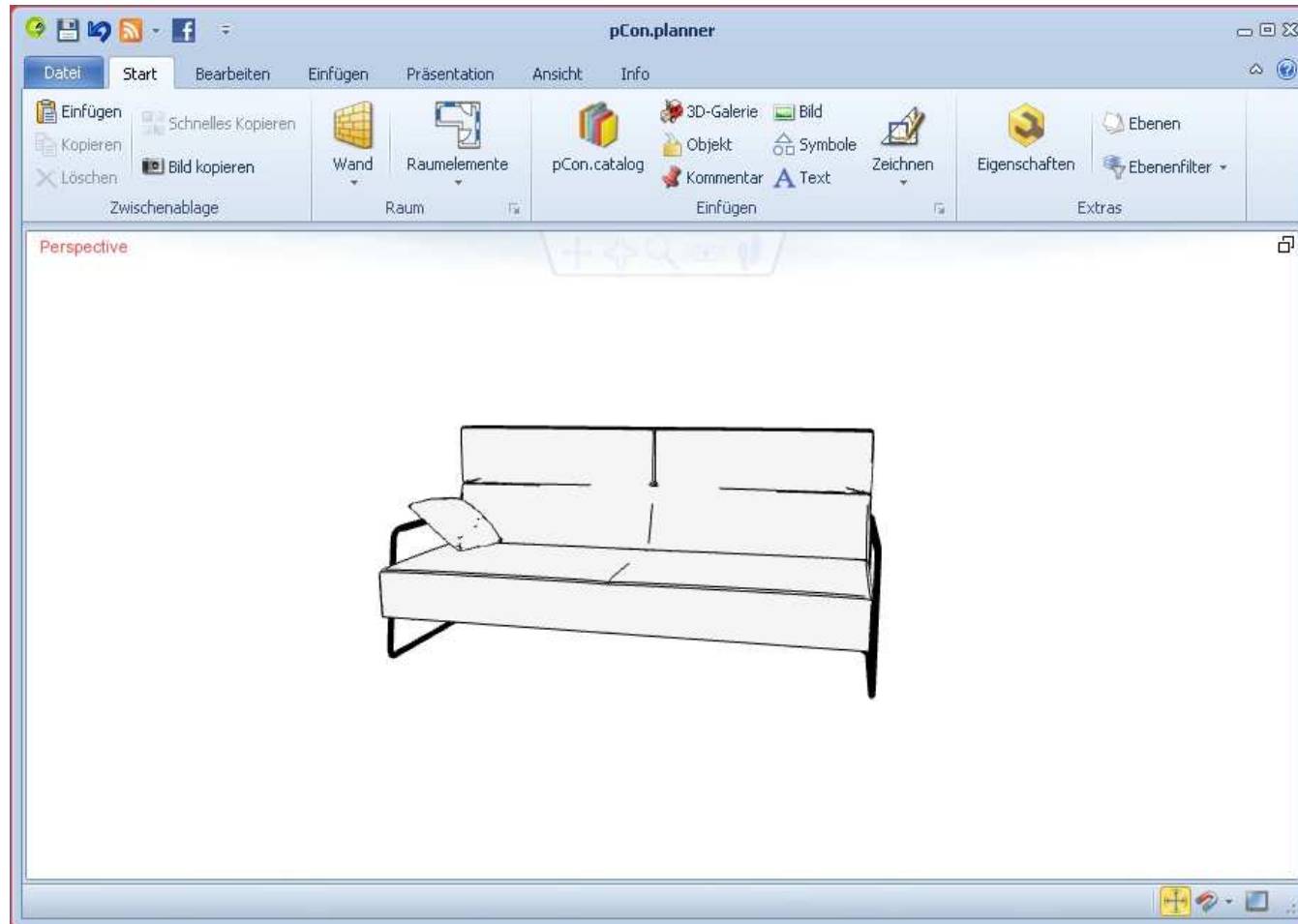


# How to access 3d models of *Ligne Roset* furniture in pCon.catalog? **pCon**

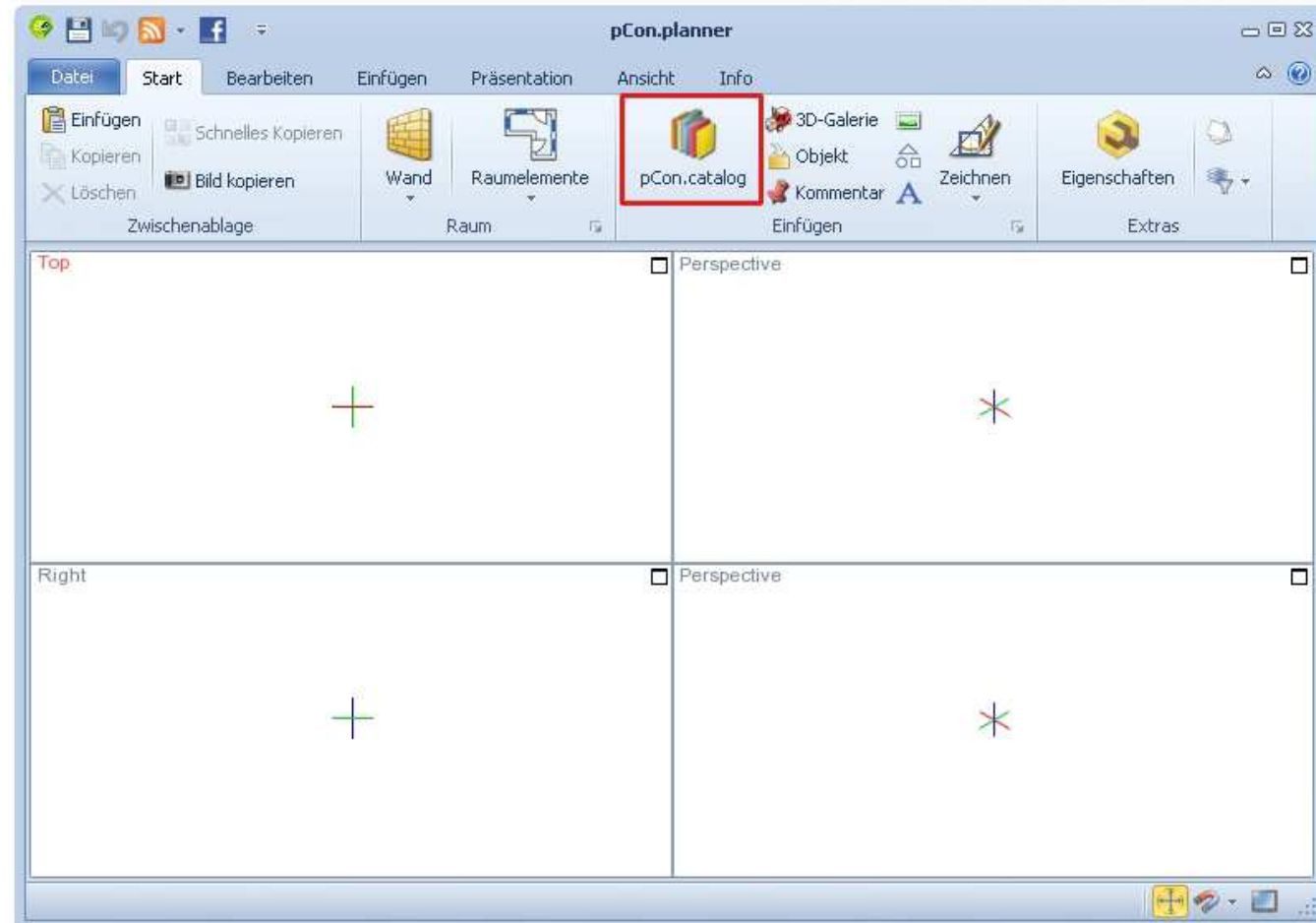


How to access 3d models of *Ligne Roset* furniture in pCon.catalog?



1. Open pCon.planner

2. Open pCon.catalog from pCon.planner

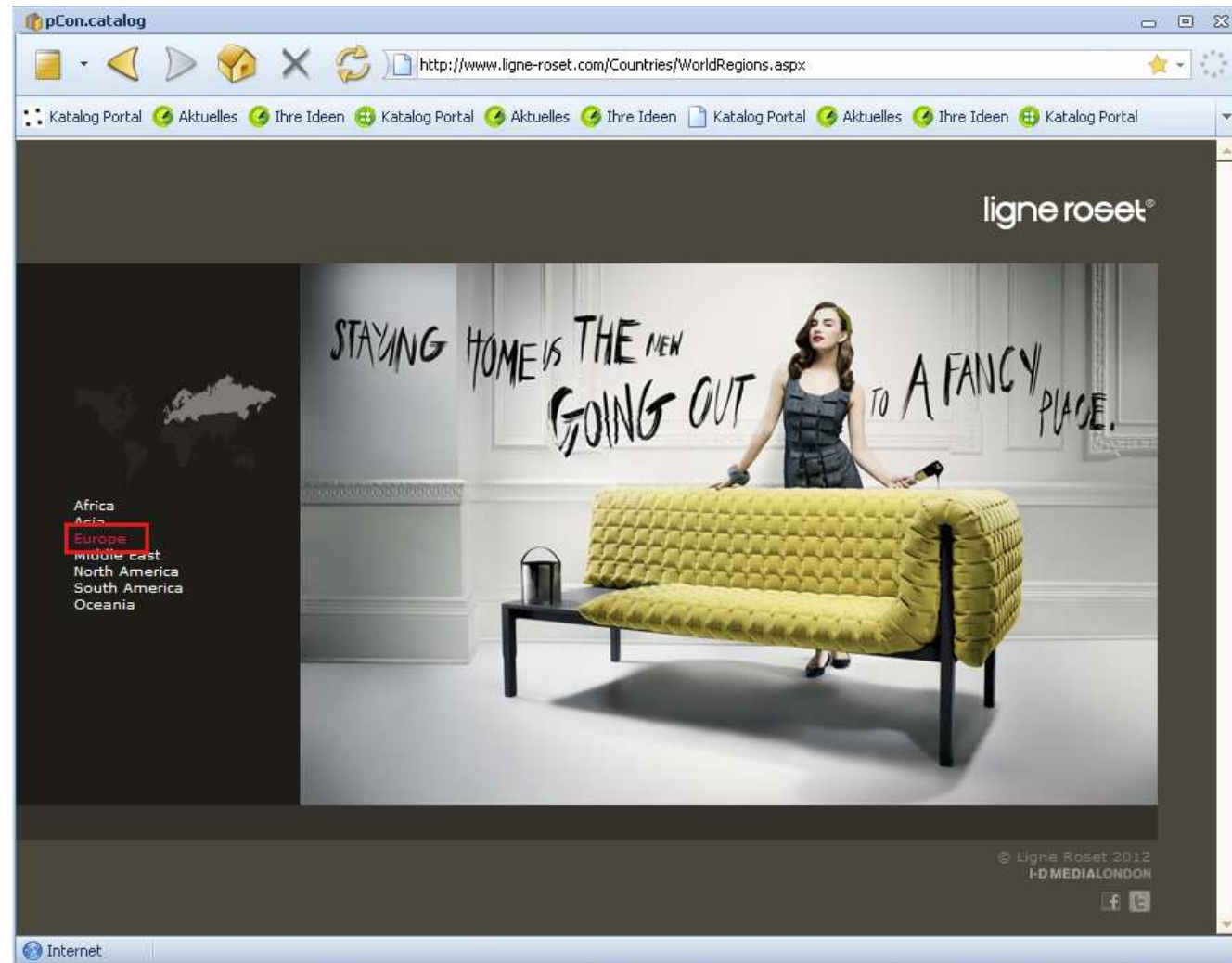


How to access 3d models of *Ligne Roset* furniture in pCon.catalog?



3. Open the *Ligne Roset* catalog

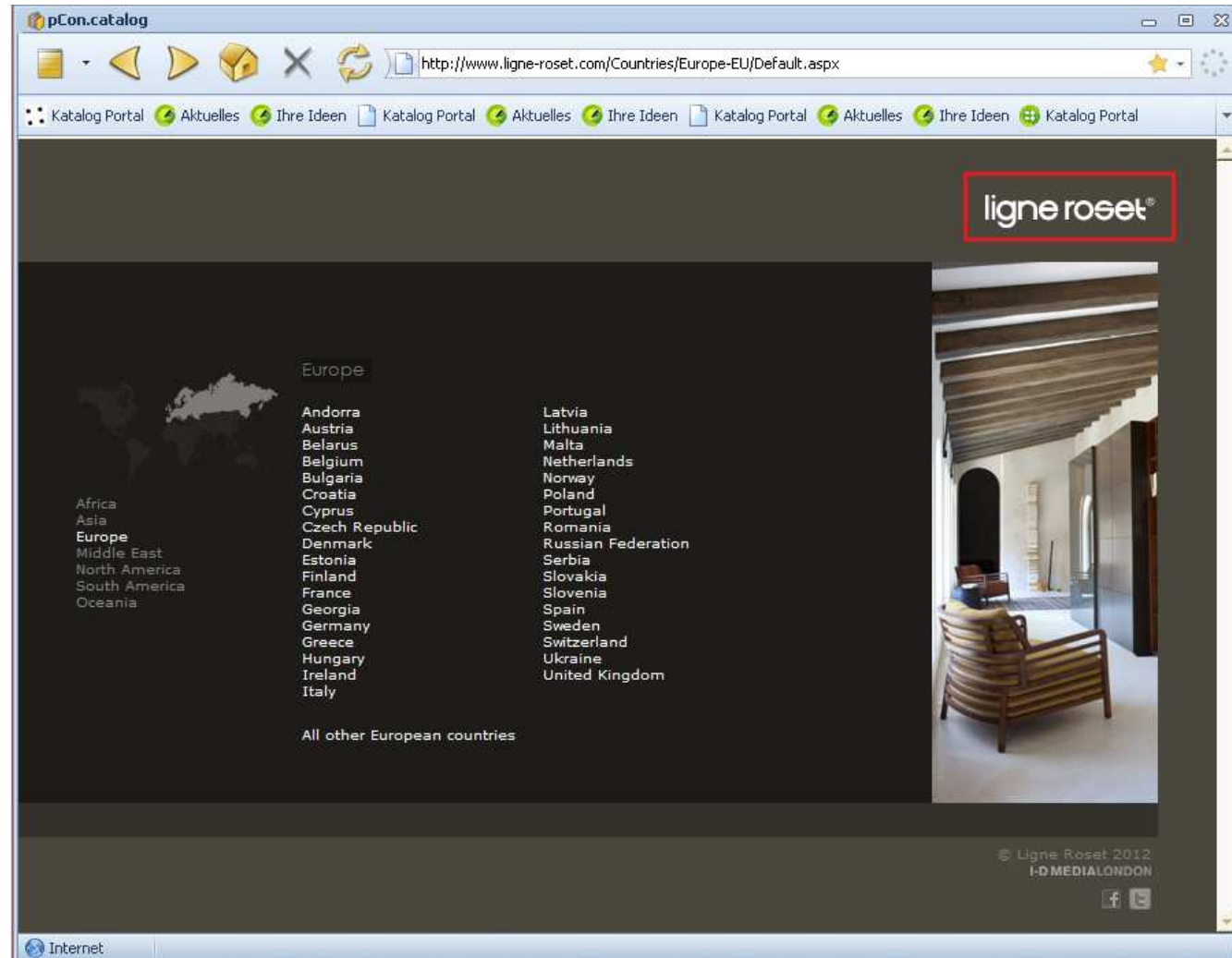
4. Click on „Europe“, or whichever region you want.



# How to access 3d models of *Ligne Roset* furniture in pCon.catalog?



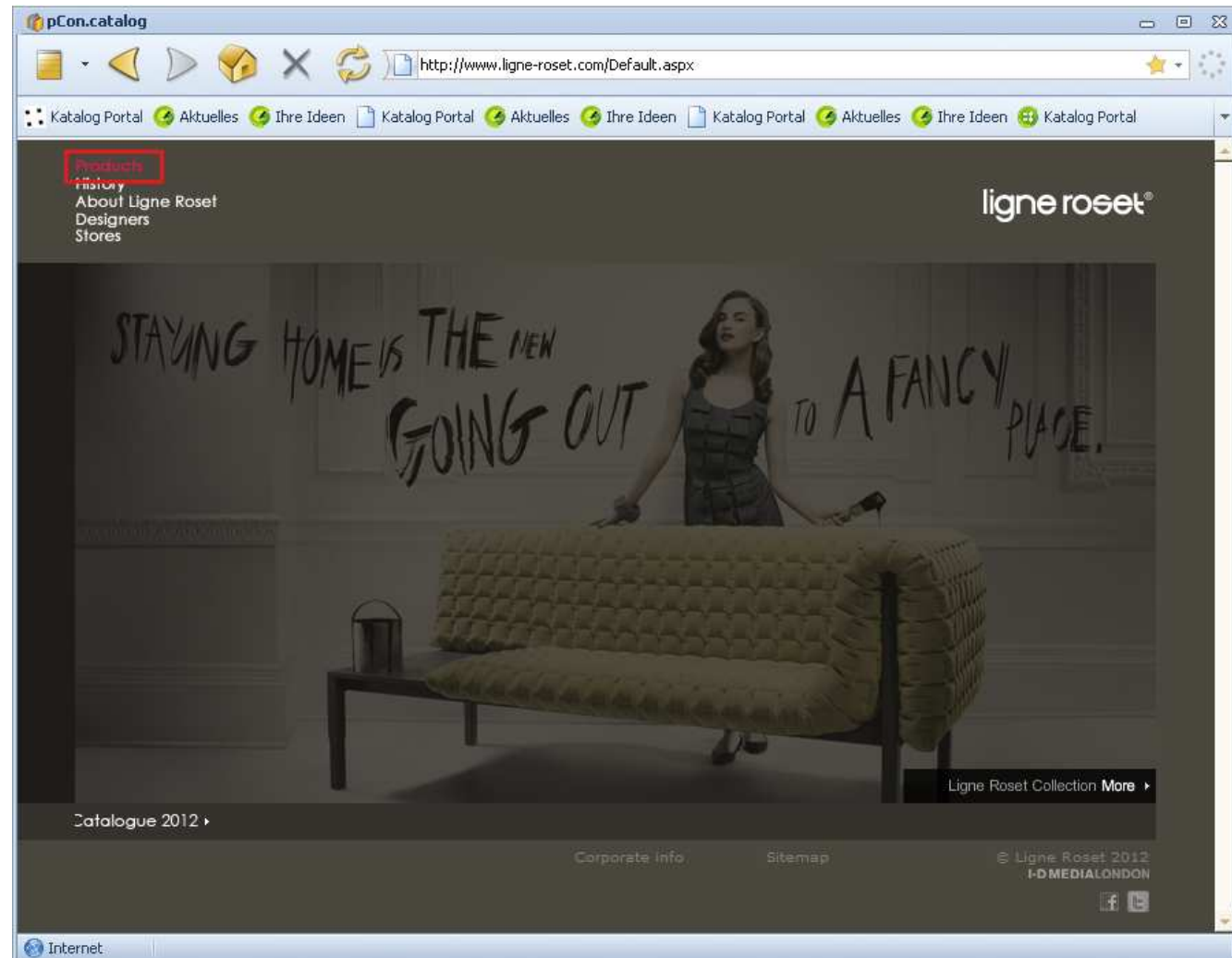
5. Click on the *Ligne Roset* logo



How to access 3d models of *Ligne Roset* furniture in pCon.catalog?



6. Click on „Products“

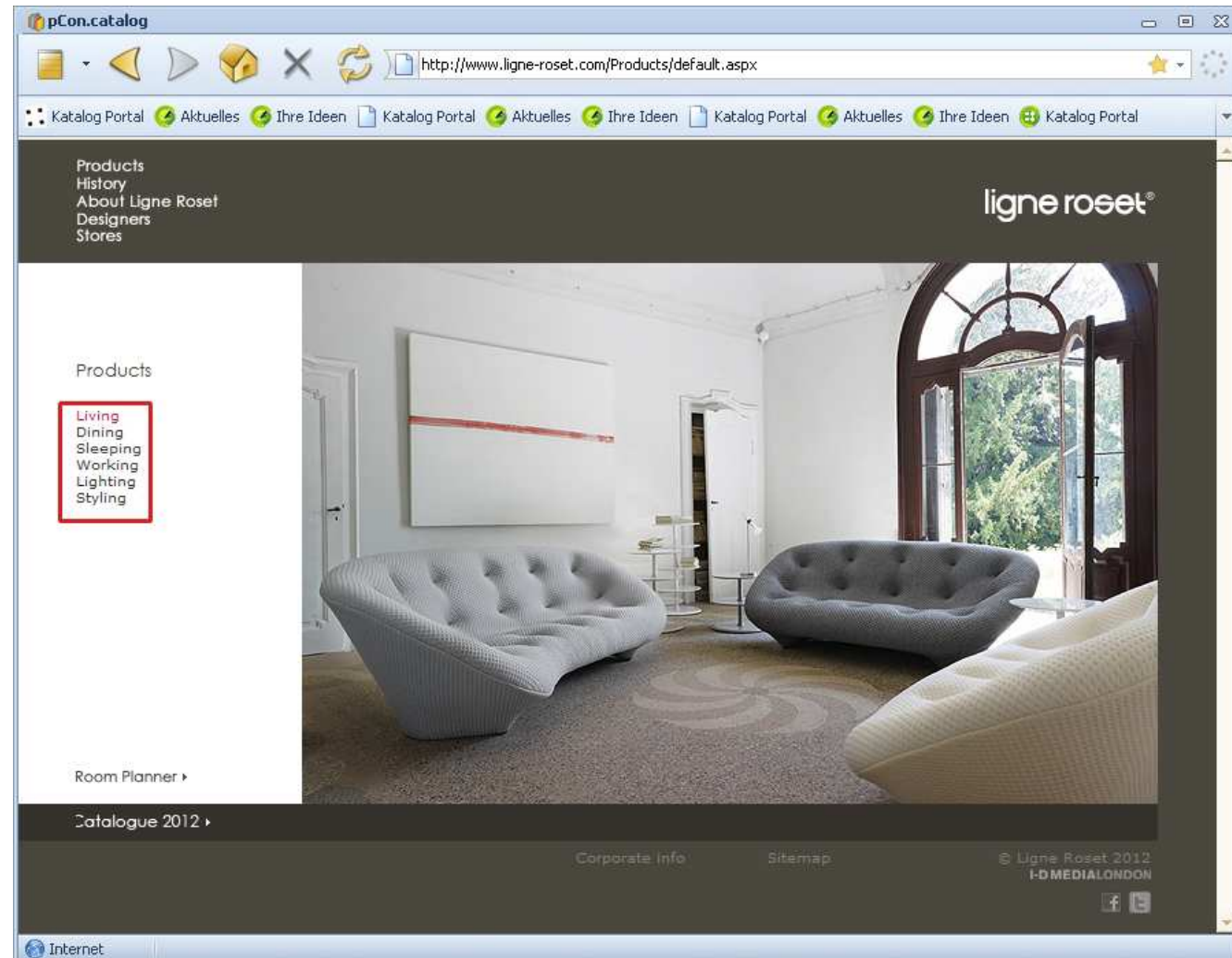


How to access 3d models of *Ligne Roset* furniture in pCon.catalog?



7. Choose whatever section you want by clicking on it

(in this case I chose „Living“)

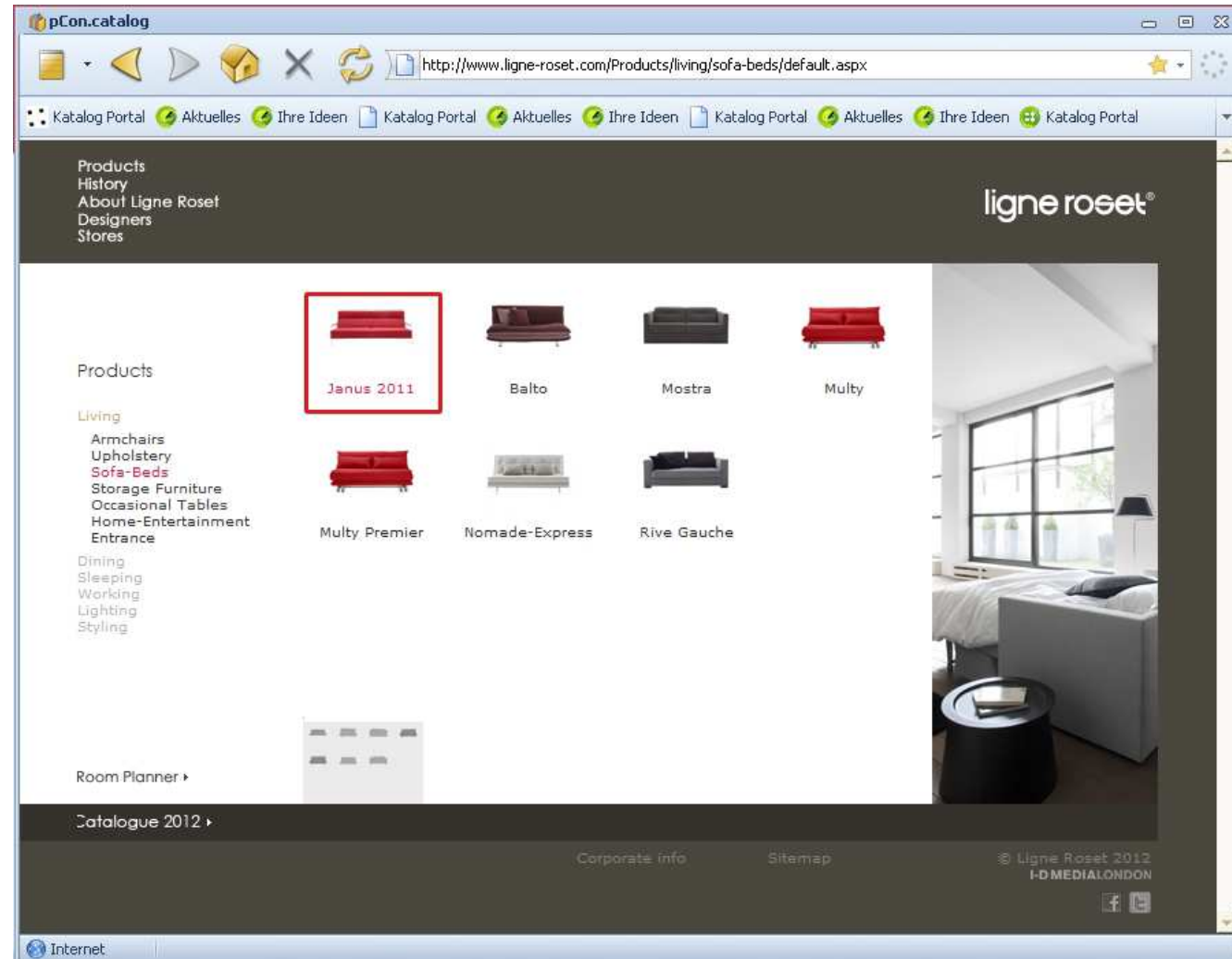




How to access 3d models of *Ligne Roset* furniture in pCon.catalog?



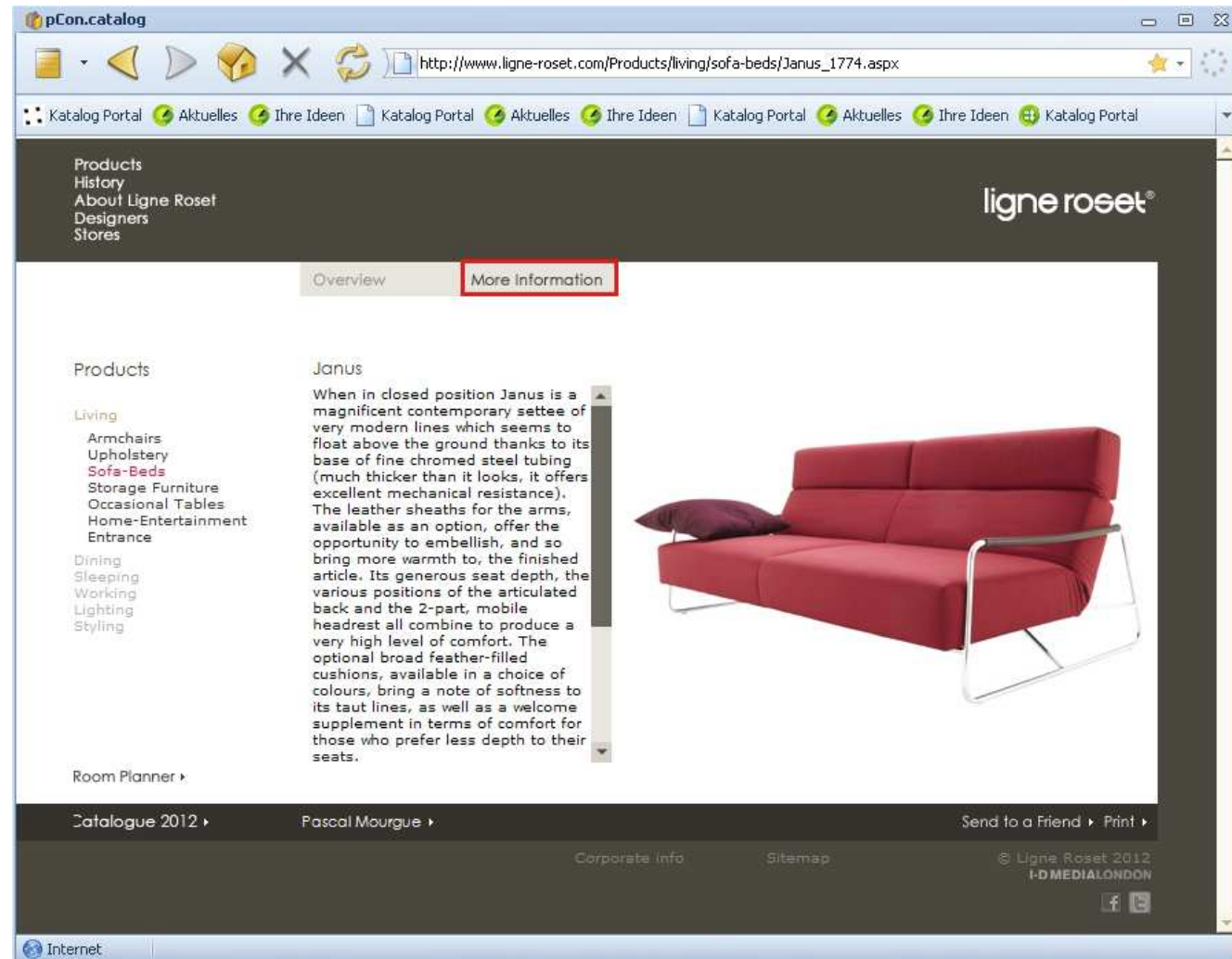
8. Click on your desired product



# How to access 3d models of *Ligne Roset* furniture in pCon.catalog?



9. Click on „More Information“

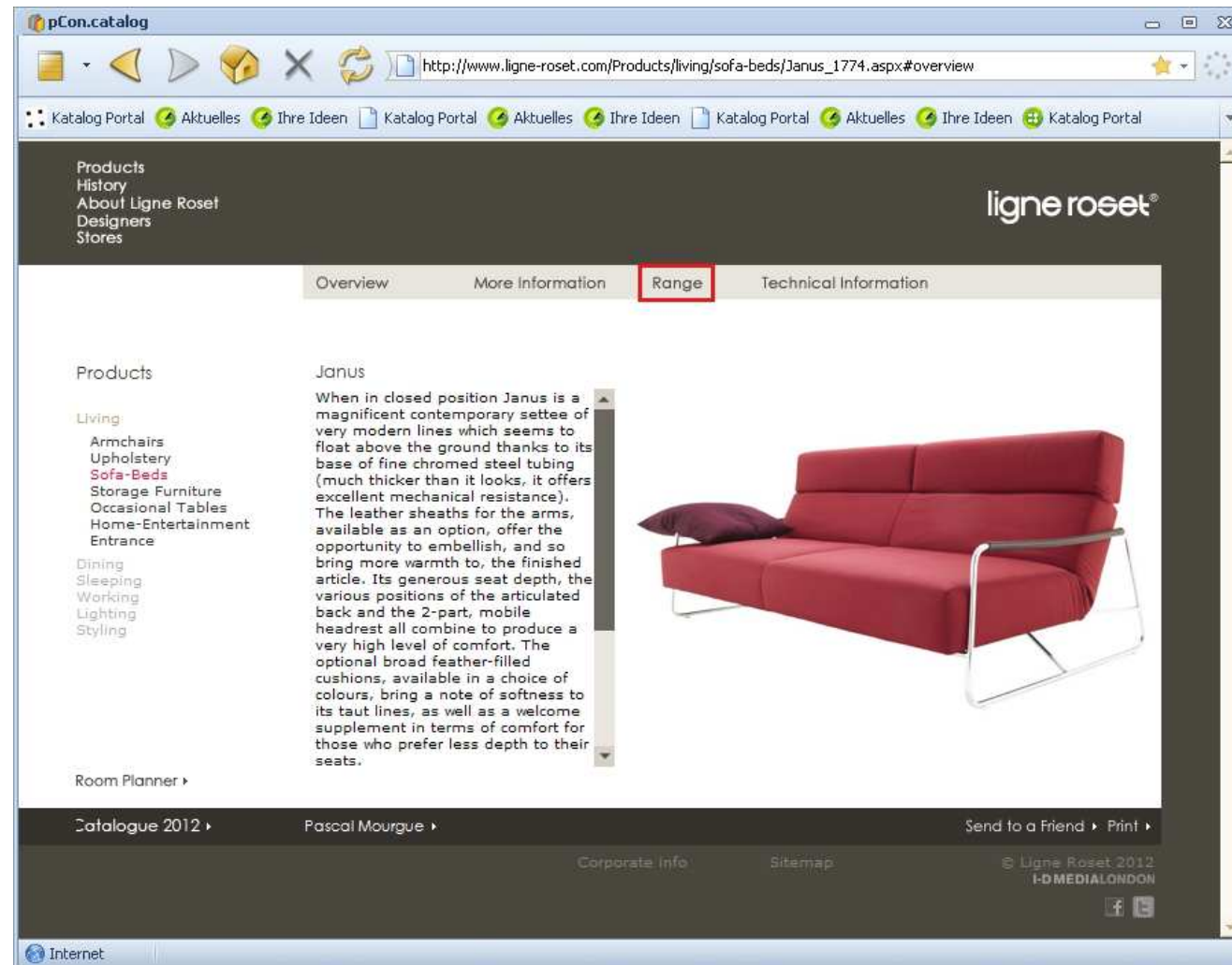




# How to access 3d models of *Ligne Roset* furniture in pCon.catalog?



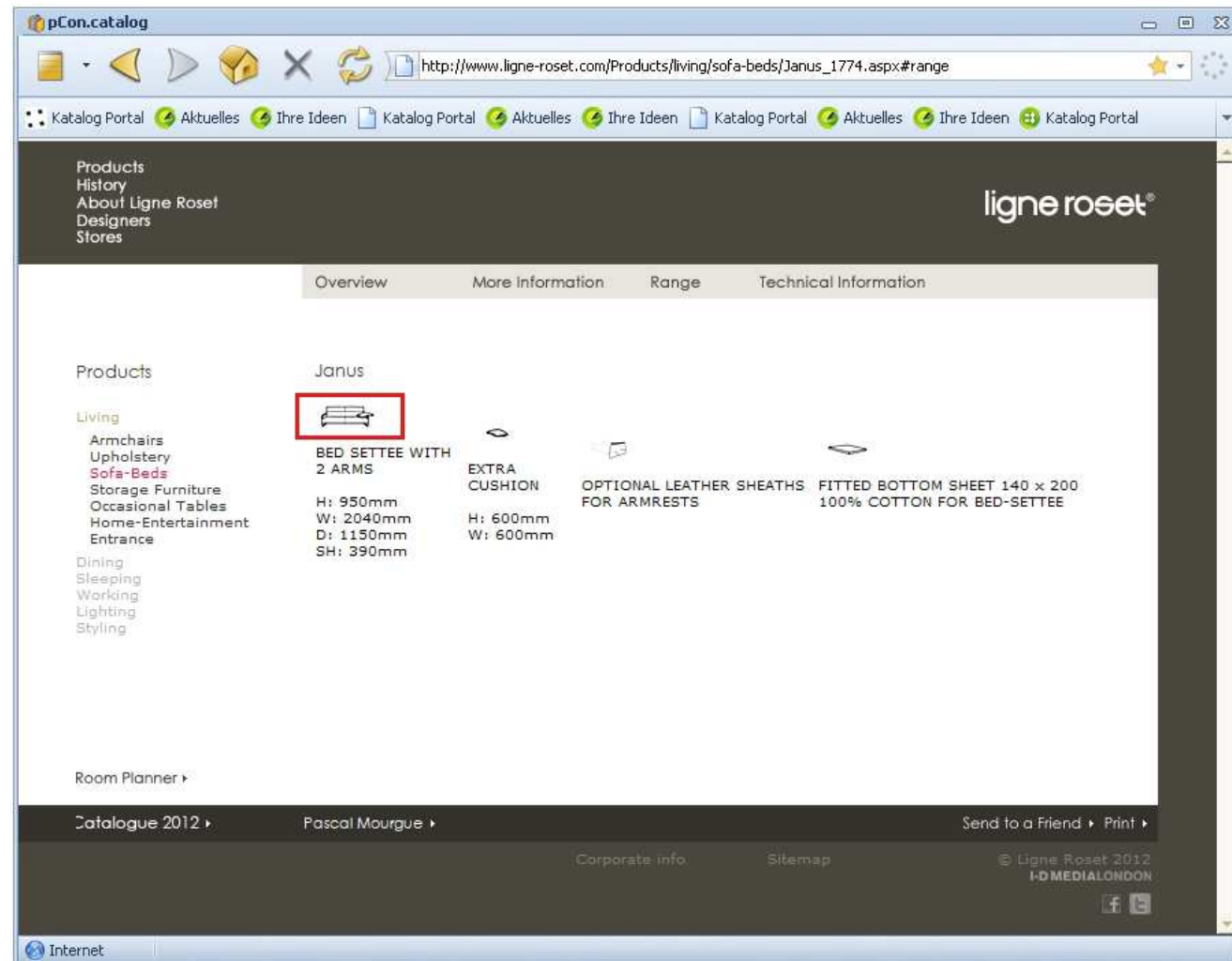
10. Click on „Range“



How to access 3d models of *Ligne Roset* furniture in pCon.catalog?



11. Click on the sketch of the product



How to access 3d models of *Ligne Roset* furniture in pCon.catalog?



12. Now the download of the .dwg should start - so you could use it in pCon.planner

